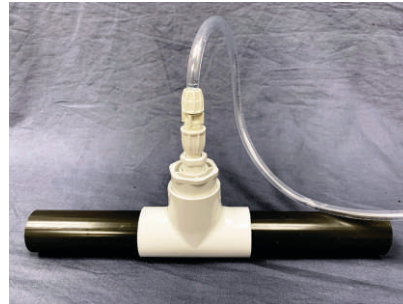
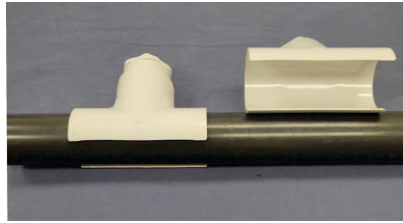


# Installing a Rust Preventer Siphon Feed System:



Snap tee and fittings

Position the 35 gallon tank so that the adjustable flow meter is easily accessible.

## **Install the injector/PVC fittings to the suction pipe (included with the system):**

1. Locate the suction side PVC pipe coming up from the well water source.
2. Attach the Snap Tee to the pipe using PVC glue.
3. Using a 1/4" drill bit, drill a hole through "T" part of the snap tee and into the pipe. (be careful not to drill all the way through to the other side of the suction pipe).
4. Glue the reducer adapter and the 1/4" female reducer fitting (used for the injector).
5. After it is dry, screw the injector into the threaded top reducer fitting.
6. Attach the discharge tubing coming from the top of the tank to the injector using the injectors coupling and tighten down.

## **Fill the solution tank and start up the system:**

1. Fill the solution tank halfway with potable municipal water (avoid using the well water).
2. Add the recommended amount of liquid Rust Preventer® to the solution tank. You can determine that using our online dosage calculator.
3. Fill with additional municipal water to the 35 gallon mark on the tank.
4. Start up the well pump to initiate the siphon response while observing the solution running up through the suction tubing into Omega flow meter - and into the tubing to the injector attached to the pipe.
5. Adjust the float by turning the adjustment knob on the Omega meter to between 0.8 GPH - 1.2 GPH to obtain around a 1 GPH injection flow rate.

System is now set to run automatically at the appropriate injection rate.



Adjustable meter